



**Robert Eckels  
County Judge**

# **NEWS RELEASE**

**Contact: Gloria Roemer**  
Communications Director  
713 – 755-4027  
713 – 398-3139 (Cell)  
[gloria\\_roemer@co.harris.tx.us](mailto:gloria_roemer@co.harris.tx.us)

**Date: August 7, 2006**  
**Release: Immediate**

## **2006 HURRICANE EVACUATION CONTRAFLOW ROUTES**

**Houston – The Texas Department of Transportation has developed a contraflow plan for the Houston/ Galveston area.**

**Evacuation plans may or may not include activating contraflow lanes. Attached are the routes if a mandatory evacuation is ordered.**

**Please provide this information on your websites, and on any information you may publish regarding hurricane preparation and evacuations.**

## Important Tips

Your needs and those of your family should be the primary factors considered when determining the timing of your evacuation. If you must evacuate, do not delay your departure in anticipation of the opening of the contraflow lanes. Should the contraflow be activated, citizens will be advised through local radio and television stations. All citizens should prepare a plan well in advance of the evacuation.

### The following steps are recommended:

- ✓ Assemble your disaster supplies kit with items such as flashlights, cell phones, extra batteries, battery chargers, portable radio, first aid kit, emergency water and food, medical supplies and equipment, non-electric can opener, highway map, important documents, such as insurance and medical information, etc.
- ✓ Secure your home against disaster to help reduce damages. Cover windows with shielding materials. Secure or put up any loose objects from around your home.
- ✓ If you cannot take your pets with you, make provisions for them.
- ✓ Know your area's evacuation plan/routes before you leave home ([www.texasonline.com](http://www.texasonline.com)).
- ✓ Fill your vehicle with gas as early as possible. Take only the vehicle necessary to transport you and your family to safety. Extra vehicles create congestion.
- ✓ Bring extra cash in case banks are closed and ATMs are not working.
- ✓ Notify family and friends (especially those out the area) of your plan and your destination.
- ✓ Develop an emergency plan in case family members are separated. Instruct all evacuating family members of the name and contact information of your designated out-of-area friend or family.
- ✓ Ensure children know how and when to call 9-1-1.
- ✓ Evacuate, traveling safely to your destination.
- ✓ Expect travel times to destinations to be significantly longer than normal.

After the storm, listen to local officials for the all-clear signal before returning home. Check for information at [www.texasonline.com](http://www.texasonline.com).

Do not try to drive through standing water. Just a few inches can float a vehicle.

## Fender-Bender?

State law requires motorists to move fender-bender accidents out of the travel lanes to the shoulder of the road. To keep all travel lanes and shoulders clear, however, disabled vehicles on the shoulder will be relocated to the next exit ramp where further assistance may be available.

More information on hurricane preparedness and evacuation safety is available from the following:

Evacuation routes, shelter, and special needs:  
Call **2-1-1**

Emergency Alert Station:  
Houston: **KTRH 740 AM**  
San Antonio: **WOAI 1200 AM**

State of Texas:  
[www.texasonline.com](http://www.texasonline.com)

Texas Department of Transportation:  
[www.dot.state.tx.us](http://www.dot.state.tx.us)  
Highway Road Conditions: **1-800-452-9292**

Texas Department of Public Safety:  
[www.txdps.state.tx.us](http://www.txdps.state.tx.us)

Governor's Division of Emergency Management:  
[www.txdps.state.tx.us/dem](http://www.txdps.state.tx.us/dem)

American Red Cross:  
**1-866-GET-HELP**  
**(438-4357)**

HOUSTON TO SAN ANTONIO

TEXAS



**2006**  
**Hurricane Evacuation**  
**Contraflow Route**

**Motorist Advisory**

**Evacuation Plans May or May Not**  
**Include Activating Contraflow Lanes**



# HOUSTON TO SAN ANTONIO

## TEXAS



# Hurricane Evacuation Route's Potential Contraflow Plan

**WHO.....**This plan will affect motorists evacuating from Houston.


**WHY.....**To help move citizens safely and efficiently out of harm's way during large-scale evacuations.

**WHAT...**If this plan is activated, I-10 eastbound lanes will be reversed to carry two lanes of westbound traffic. Traffic in the contraflow lanes will be able to exit I-10 at selected locations.

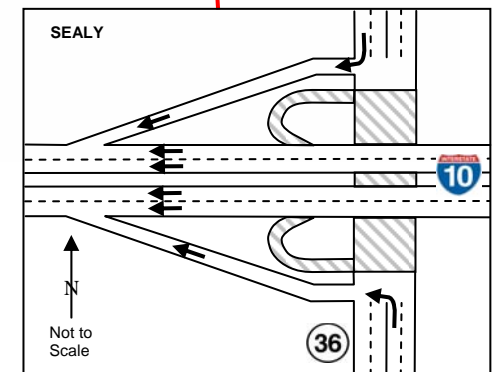
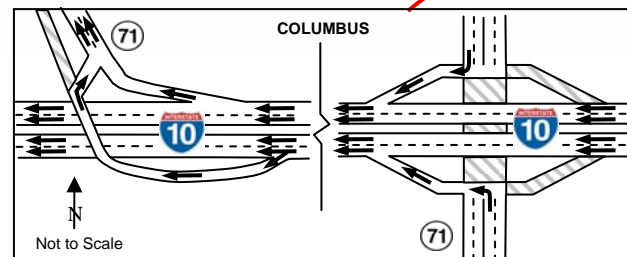
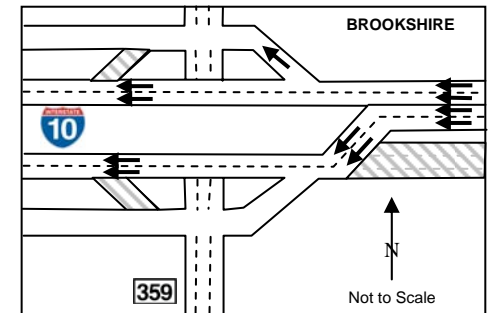
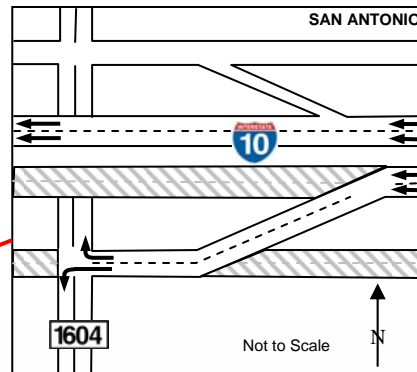
**WHEN...**The reversal will be considered only when the Houston area is threatened by a major hurricane and mandatory evacuations are issued. A decision to reverse I-10 will be made by the Texas Department of Public Safety based on the strength of the storm and projected landfall.

**WHERE...**The contraflow operations will begin east of FM 359 in Brookshire, TX. Traffic in two westbound lanes will cross over to the contraflow side to travel westbound. The contraflow lanes will end at Loop 1604 in San Antonio, TX.

**LEGEND**



No Traffic Zone



## Important Tips

Your needs and those of your family should be the primary factors considered when determining the timing of your evacuation. If you must evacuate, do not delay your departure in anticipation of the opening of the contraflow lanes. Should the contraflow be activated, citizens will be advised through local radio and television stations. All citizens should prepare a plan well in advance of the evacuation.

### The following steps are recommended:

- ✓ Assemble your disaster supplies kit with items such as flashlights, cell phones, extra batteries, battery chargers, portable radio, first aid kit, emergency water and food, medical supplies and equipment, non-electric can opener, highway map, important documents, such as insurance and medical information, etc.
- ✓ Secure your home against disaster to help reduce damages. Cover windows with shielding materials. Secure or put up any loose objects from around your home.
- ✓ If you cannot take your pets with you, make provisions for them.
- ✓ Know your area's evacuation plan/routes before you leave home ([www.texasonline.com](http://www.texasonline.com)).
- ✓ Fill your vehicle with gas as early as possible. Take only the vehicle necessary to transport you and your family to safety. Extra vehicles create congestion.
- ✓ Bring extra cash in case banks are closed and ATMs are not working.
- ✓ Notify family and friends (especially those out the area) of your plan and your destination.
- ✓ Develop an emergency plan in case family members are separated. Instruct all evacuating family members of the name and contact information of your designated out-of-area friend or family.
- ✓ Ensure children know how and when to call 9-1-1.
- ✓ Evacuate, traveling safely to your destination.
- ✓ Expect travel times to destinations to be significantly longer than normal.

After the storm, listen to local officials for the all-clear signal before returning home. Check for information at [www.texasonline.com](http://www.texasonline.com).

Do not try to drive through standing water. Just a few inches can float a vehicle.

## Fender-Bender?

State law requires motorists to move fender-bender accidents out of the travel lanes to the shoulder of the road. To keep all travel lanes and shoulders clear, however, disabled vehicles on the shoulder will be relocated to the next exit ramp where further assistance may be available.

More information on hurricane preparedness and evacuation safety is available from the following:

Evacuation routes, shelter, and special needs:  
Call **2-1-1**

Emergency Alert Station:  
Houston: **KTRH 740 AM**  
Dallas: **WBAP 820 AM**

State of Texas:  
[www.texasonline.com](http://www.texasonline.com)

Texas Department of Transportation:  
[www.dot.state.tx.us](http://www.dot.state.tx.us)  
Highway Road Conditions: **1-800-452-9292**

Texas Department of Public Safety:  
[www.txdps.state.tx.us](http://www.txdps.state.tx.us)

Governor's Division of Emergency Management:  
[www.txdps.state.tx.us/dem](http://www.txdps.state.tx.us/dem)

American Red Cross:  
**1-866-GET-HELP**  
**(438-4357)**

Rev. 7/6/06

HOUSTON TO DALLAS

TEXAS



**2006**  
**Hurricane Evacuation**  
**Contraflow Route**

**Motorist Advisory**

**Evacuation Plans May or May Not**  
**Include Activating Contraflow Lanes**



# HOUSTON TO DALLAS

TEXAS



## Hurricane Evacuation Route's Potential Contraflow Plan

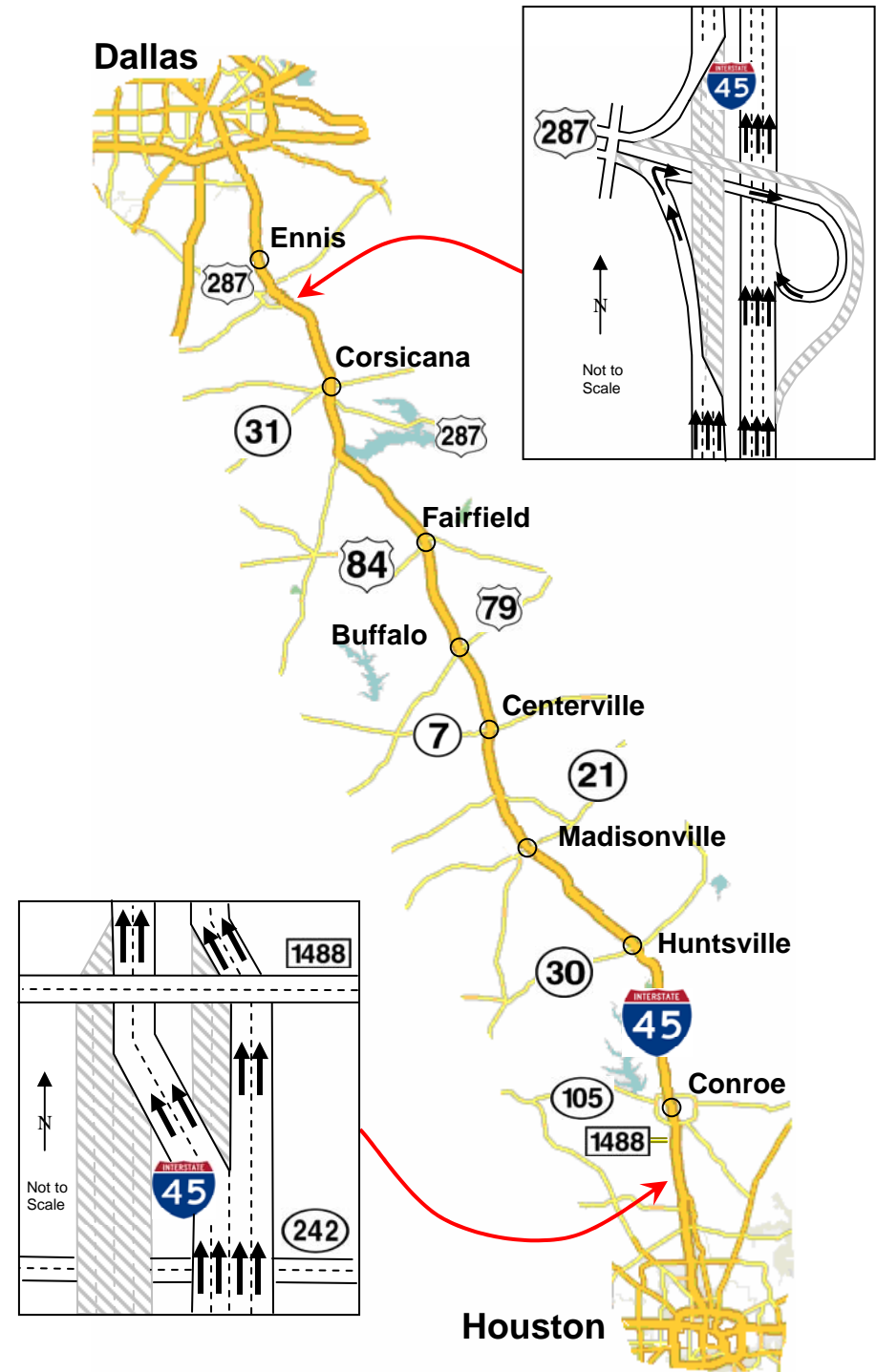
**WHO.....**This plan will affect motorists evacuating from the Houston area.

**WHY.....**To help move citizens safely and efficiently out of harm's way during large-scale evacuations.

**WHAT...**If this plan is activated, I-45 southbound lanes will be reversed to carry two lanes of northbound traffic. Traffic in the contraflow lanes will be able to exit I-45 at selected locations.

**WHEN...**The reversal will be considered only when the Houston area is threatened by a major hurricane and mandatory evacuations are issued. A decision to reverse I-45 will be made by the Texas Department of Public Safety based on the strength of the storm and projected landfall.

**WHERE...**The contraflow operations will begin north of SH 242. Some northbound traffic will cross over to the contraflow side to travel northbound. Contraflow and other I-45 motorists will have access to fuel stations at multiple locations along I-45. The contraflow lanes will end at US 287 near Ennis, TX, 40 miles south of Dallas, TX.



## Important Tips

Your needs and those of your family should be the primary factors considered when determining the timing of your evacuation. If you must evacuate, do not delay your departure in anticipation of the opening of the contraflow lanes. Should the contraflow be activated, citizens will be advised through local radio and television stations. All citizens should prepare a plan well in advance of the evacuation.

### The following steps are recommended:

- ✓ Assemble your disaster supplies kit with items such as flashlights, cell phones, extra batteries, battery chargers, portable radio, first aid kit, emergency water and food, medical supplies and equipment, non-electric can opener, highway map, important documents, such as insurance and medical information, etc.
- ✓ Secure your home against disaster to help reduce damages. Cover windows with shielding materials. Secure or put up any loose objects from around your home.
- ✓ If you cannot take your pets with you, make provisions for them.
- ✓ Know your area's evacuation plan/routes before you leave home ([www.texasonline.com](http://www.texasonline.com)).
- ✓ Fill your vehicle with gas as early as possible. Take only the vehicle necessary to transport you and your family to safety. Extra vehicles create congestion.
- ✓ Bring extra cash in case banks are closed and ATMs are not working.
- ✓ Notify family and friends (especially those out the area) of your plan and your destination.
- ✓ Develop an emergency plan in case family members are separated. Instruct all evacuating family members of the name and contact information of your designated out-of-area friend or family.
- ✓ Ensure children know how and when to call 9-1-1.
- ✓ Evacuate, traveling safely to your destination.
- ✓ Expect travel times to destinations to be significantly longer than normal.

After the storm, listen to local officials for the all-clear signal before returning home. Check for information at [www.texasonline.com](http://www.texasonline.com).

Do not try to drive through standing water. Just a few inches can float a vehicle.

## Fender-Bender?

State law requires motorists to move fender-bender accidents out of the travel lanes to the shoulder of the road. To keep all travel lanes and shoulders clear, however, disabled vehicles on the shoulder will be relocated to the next exit ramp where further assistance may be available.

More information on hurricane preparedness and evacuation safety is available from the following:

Evacuation routes, shelter, and special needs:  
Call **2-1-1**

Emergency Alert Station:  
Houston: **KTRH 740 AM**

State of Texas:  
[www.texasonline.com](http://www.texasonline.com)

Texas Department of Transportation:  
[www.dot.state.tx.us](http://www.dot.state.tx.us)  
Highway Road Conditions: **1-800-452-9292**

Texas Department of Public Safety:  
[www.txdps.state.tx.us](http://www.txdps.state.tx.us)

Governor's Division of Emergency Management:  
[www.txdps.state.tx.us/dem](http://www.txdps.state.tx.us/dem)

American Red Cross:  
**1-866-GET-HELP**  
(438-4357)

HOUSTON TO NACOGDOCHES

TEXAS



**2006**  
**Hurricane Evacuation**  
**Contraflow Route**

**Motorist Advisory**

**Evacuation Plans May or May Not**  
**Include Activating Contraflow Lanes**



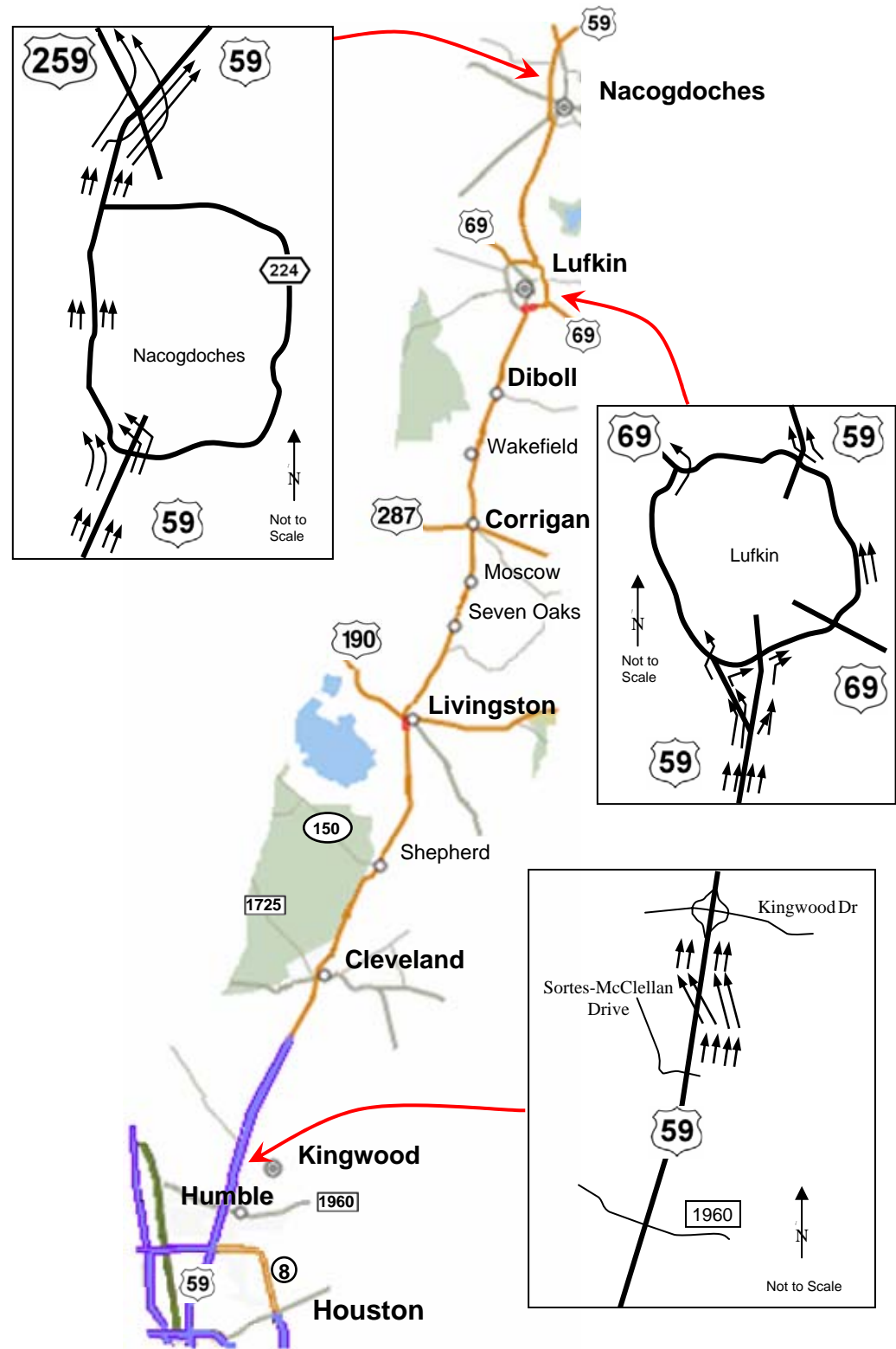
# HOUSTON TO NACOGDOCHES

TEXAS



## Hurricane Evacuation Route's Potential Contraflow Plan

- WHO.....**This plan will affect motorists evacuating from the Houston area.
- WHY.....**To help move citizens safely and efficiently out of harm's way during large-scale evacuations.
- WHAT...**If this plan is activated, US 59 southbound lanes will be reversed to carry two lanes of northbound traffic. Traffic in the contraflow lanes will be able to exit US 59.
- WHEN...**The reversal will be considered only when the Houston area is threatened by a major hurricane and mandatory evacuations are issued. A decision to reverse US 59 will be made by the Texas Department of Public Safety based on the strength of the storm and projected landfall.
- WHERE..**The contraflow operations will begin south of Kingwood Drive and continue to Nacogdoches, TX.



## Important Tips

Your needs and those of your family should be the primary factors considered when determining the timing of your evacuation. If you must evacuate, do not delay your departure in anticipation of the opening of the contraflow lanes. Should the contraflow be activated, citizens will be advised through local radio and television stations. All citizens should prepare a plan well in advance of the evacuation.

### The following steps are recommended:

- ✓ Assemble your disaster supplies kit with items such as flashlights, cell phones, extra batteries, battery chargers, portable radio, first aid kit, emergency water and food, medical supplies and equipment, non-electric can opener, highway map, important documents, such as insurance and medical information, etc.
- ✓ Secure your home against disaster to help reduce damages. Cover windows with shielding materials. Secure or put up any loose objects from around your home.
- ✓ If you cannot take your pets with you, make provisions for them.
- ✓ Know your area's evacuation plan/routes before you leave home ([www.texasonline.com](http://www.texasonline.com)).
- ✓ Fill your vehicle with gas as early as possible. Take only the vehicle necessary to transport you and your family to safety. Extra vehicles create congestion.
- ✓ Bring extra cash in case banks are closed and ATMs are not working.
- ✓ Notify family and friends (especially those out the area) of your plan and your destination.
- ✓ Develop an emergency plan in case family members are separated. Instruct all evacuating family members of the name and contact information of your designated out-of-area friend or family.
- ✓ Ensure children know how and when to call 9-1-1.
- ✓ Evacuate, traveling safely to your destination.
- ✓ Expect travel times to destinations to be significantly longer than normal.

After the storm, listen to local officials for the all-clear signal before returning home. Check for information at [www.texasonline.com](http://www.texasonline.com).

Do not try to drive through standing water. Just a few inches can float a vehicle.

## Fender-Bender?

State law requires motorists to move fender-bender accidents out of the travel lanes to the shoulder of the road. To keep all travel lanes and shoulders clear, however, disabled vehicles on the shoulder will be relocated to the next exit ramp where further assistance may be available.

More information on hurricane preparedness and evacuation safety is available from the following:

Evacuation routes, shelter, and special needs:  
Call **2-1-1**

Emergency Alert Station:  
Houston: **KTRH 740 AM**

State of Texas:  
[www.texasonline.com](http://www.texasonline.com)

Texas Department of Transportation:  
[www.dot.state.tx.us](http://www.dot.state.tx.us)  
Highway Road Conditions: **1-800-452-9292**

Texas Department of Public Safety:  
[www.txdps.state.tx.us](http://www.txdps.state.tx.us)

Governor's Division of Emergency Management:  
[www.txdps.state.tx.us/dem](http://www.txdps.state.tx.us/dem)

American Red Cross:  
**1-866-GET-HELP**  
(438-4357)

HOUSTON TO AUSTIN, BRYAN,  
COLLEGE STATION, WACO

TEXAS



**2006**  
**Hurricane Evacuation**  
**Contraflow Route**

**Motorist Advisory**

**Evacuation Plans May or May Not**  
**Include Activating Contraflow Lanes**





# HOUSTON TO AUSTIN, BRYAN, COLLEGE STATION, WACO

TEXAS



## Hurricane Evacuation Route's Potential Contraflow Plan

**WHO.....**This plan will affect motorists evacuating from the Houston area.  
**WHY.....**To help move citizens safely and efficiently out of harm's way during large-scale evacuations.  
**WHAT...**If this plan is activated, US 290 eastbound lanes will be reversed to carry two lanes of westbound traffic. Traffic in the contraflow lanes will be able to exit US 290 at selected locations.  
**WHEN...**The reversal will be considered only when the Houston area is threatened by a major hurricane and mandatory evacuations are issued. A decision to reverse US 290 will be made by the Texas Department of Public Safety based on the strength of the storm and projected landfall.  
**WHERE..**The contraflow operations will begin west of FM 1960. Northbound traffic from SH 6 can turn west into US 290 contraflow lanes.

